

Part No. 9000469

ISM 915 MHz Ceramic Patch Antenna

ISM915: 902 - 928 MHz

Supports: RFID, Tracking, Industrial Devices, Remote Instrumentation, Control Access



KYOCERA AVX series of ISM Ceramic Patch Antennas deliver on the key needs of device designers for higher functionality and performance in RFID designs. These innovative antennas provide compelling advantages for ISM 915 MHz enabled RFID applications such as inventory tracking.

ISM 915 MHz Ceramic Patch Antenna

902-928 MHz

KEY BENEFITS

Reduced Costs and Time-to-Market

Standard antenna eliminates design fees and cycle time associated with a custom solution; getting products to market faster.

Quicker Time-to-Market

By optimizing antenna size, performance and emissions, customer and regulatory specifications are more easily met.

Environmental Compliance

Products are the latest RoHS version compliant.

APPLICATIONS

- Embedded design
- Remote instrumentation
- Tracking
- M2M
- Control Access
- Industrial Devices

Electrical Specifications

Typical Characteristics on 70 x 70 mm rectangle PCB

Frequency	ISM 915 MHz (902 - 928) MHz
Peak Gain	1.1 dBi
Average Efficiency	54%
VSWR	1.37:1
Gain @ Zenith	0.5 dBi
Axial Ratio	4.4 dB ($\theta=0, \Phi=0$), 3.2 dB ($\theta=0, \Phi=90$)
Power Handling	2 Watt CW
Feed Point Impedance	50 Ω unbalanced
Polarization	R.H.C.P
Radiation Pattern	Omni-Directional

Mechanical Specifications & Ordering Part Number

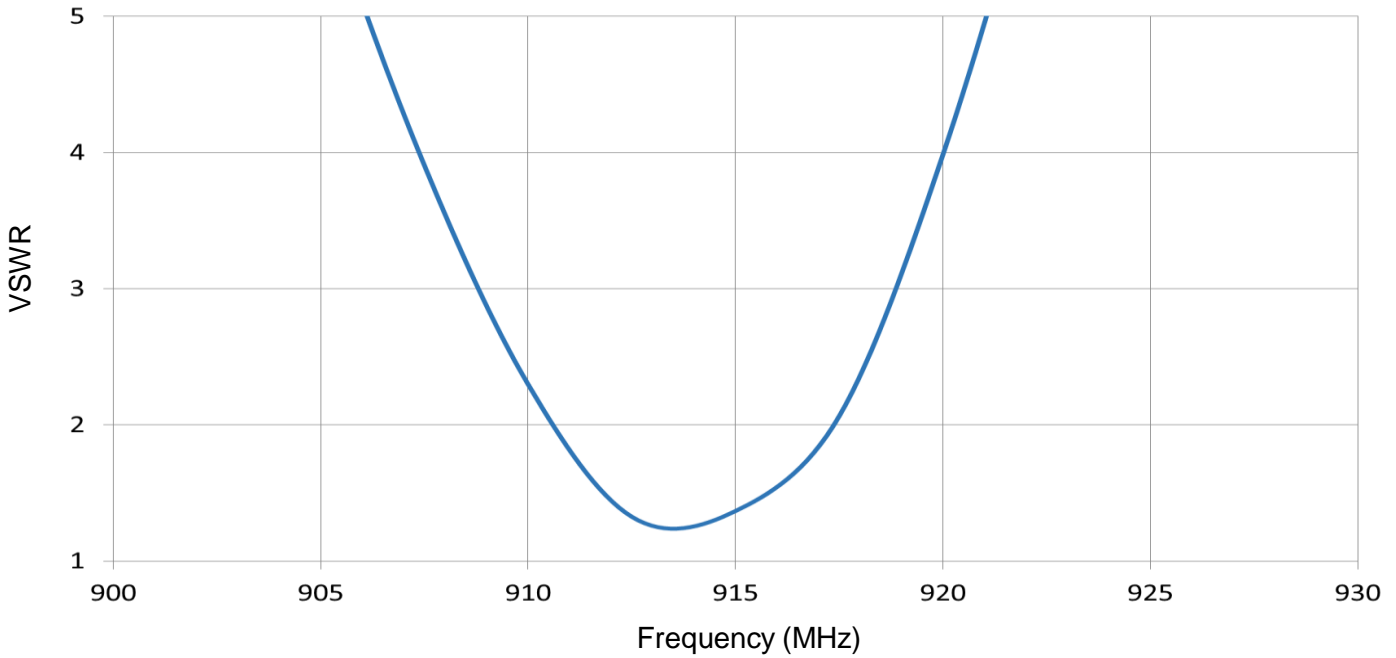
Ordering Part Number	9000469
Size (mm)	36 x 36 x 6.0
Mounting	Adhesive & Pin
Weight (grams)	35.9
Packaging	Tray

ISM 915 MHz Ceramic Patch KYOCERA AVX Embedded Antenna Specifications
 KYOCERA AVX produces a wide variety of standard and custom antennas to meet user needs

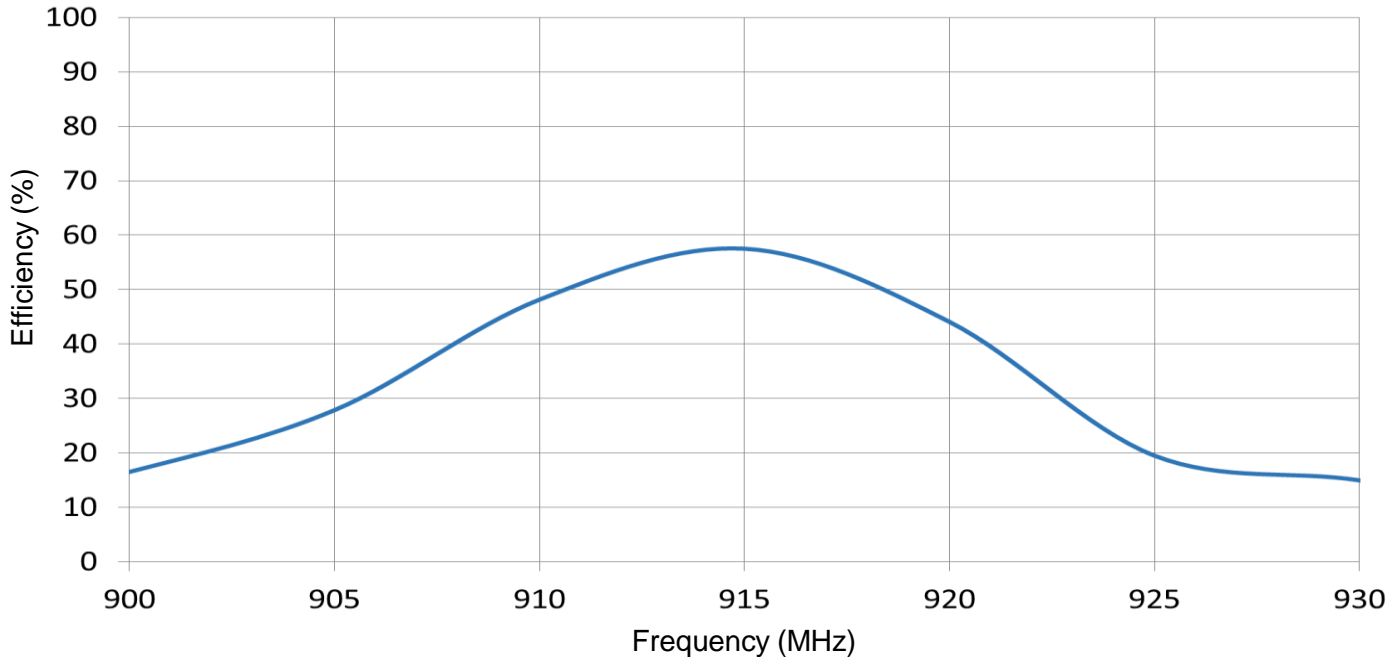
VSWR and Efficiency Plots

Typical performances on 70 x 70 mm rectangle PCB

VSWR
902 – 928 MHz



Efficiency
902 – 928 MHz

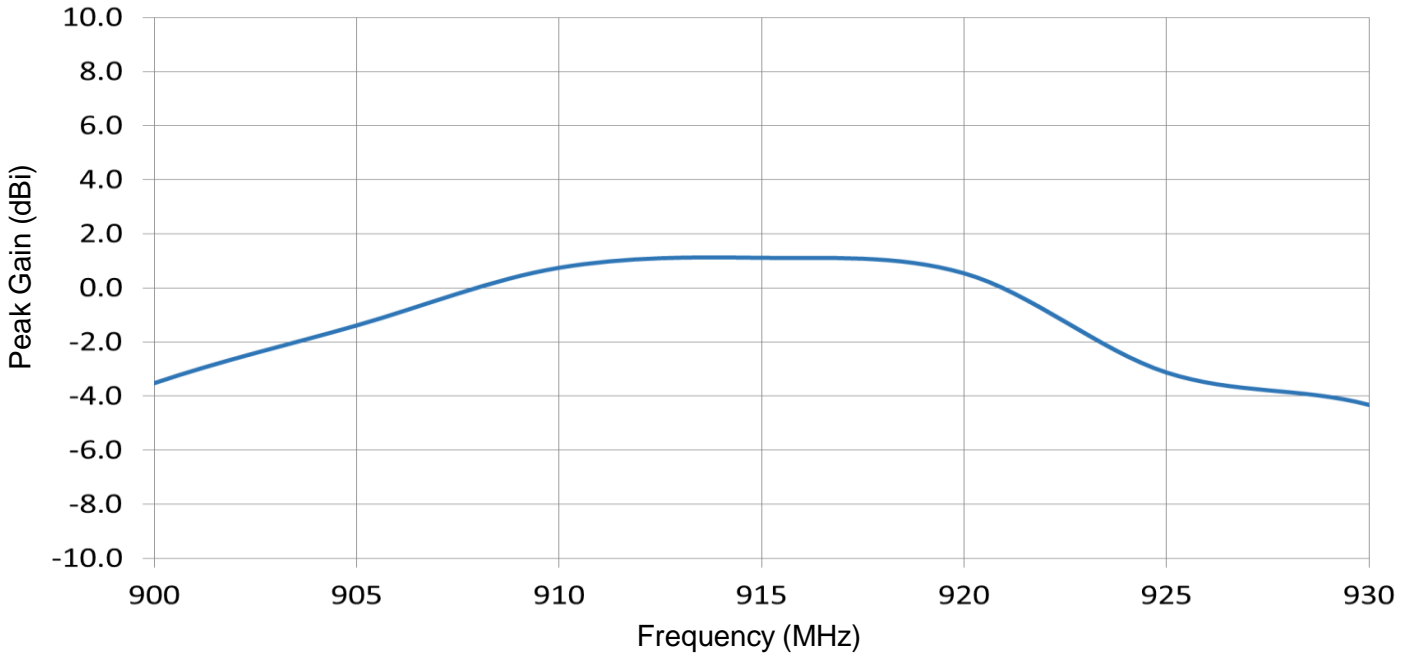


ISM 915 MHz Ceramic Patch KYOCERA AVX Embedded Antenna Specifications
 KYOCERA AVX produces a wide variety of standard and custom antennas to meet user needs

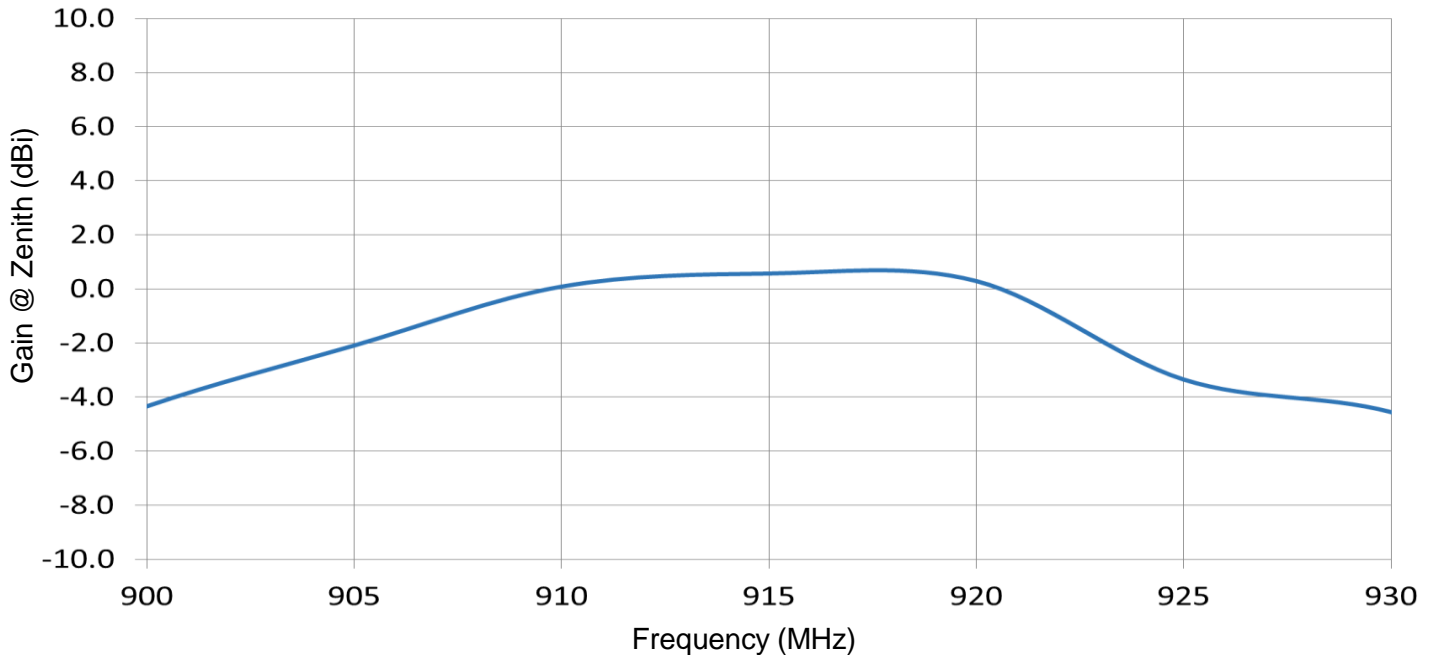
Peak Gain and Gain at Zenith Plot

Typical performances on 70 x 70 mm rectangle PCB

**Peak Gain
902 – 928 MHz**



**Gain @ Zenith
902 – 928 MHz**

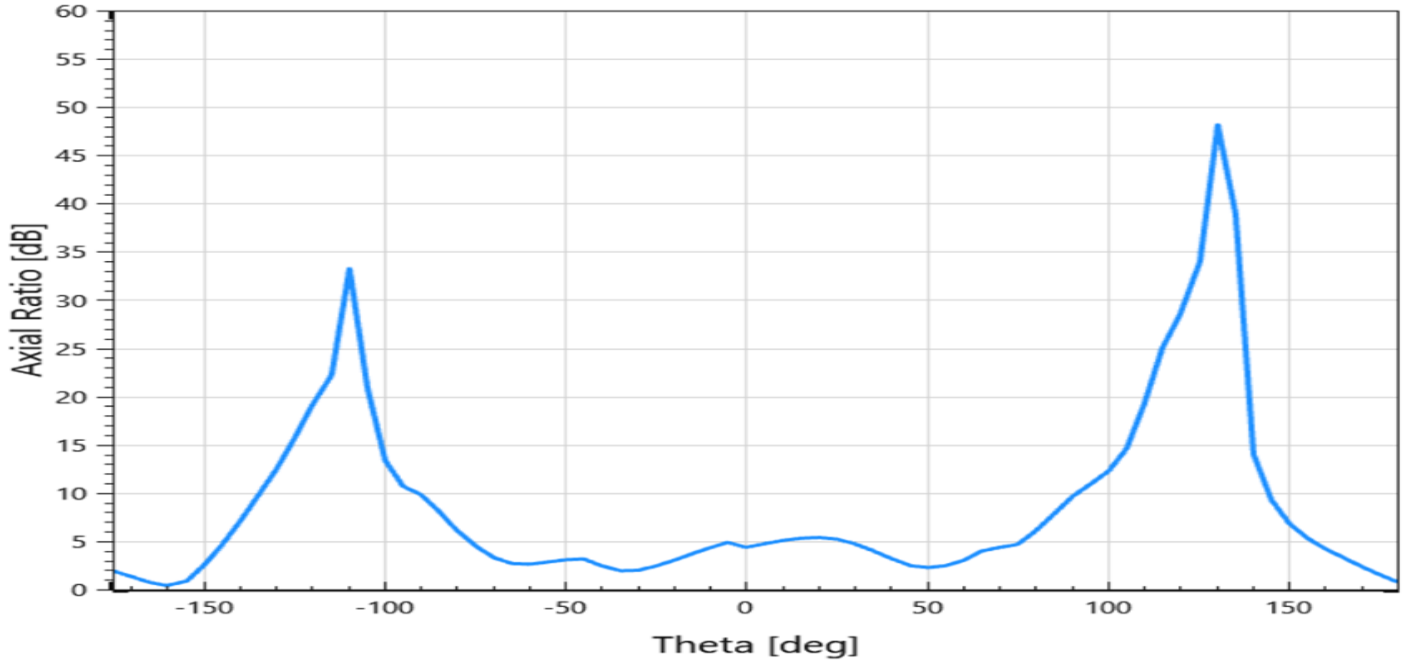


ISM 915 MHz Ceramic Patch KYOCERA AVX Embedded Antenna Specifications
 KYOCERA AVX produces a wide variety of standard and custom antennas to meet user needs

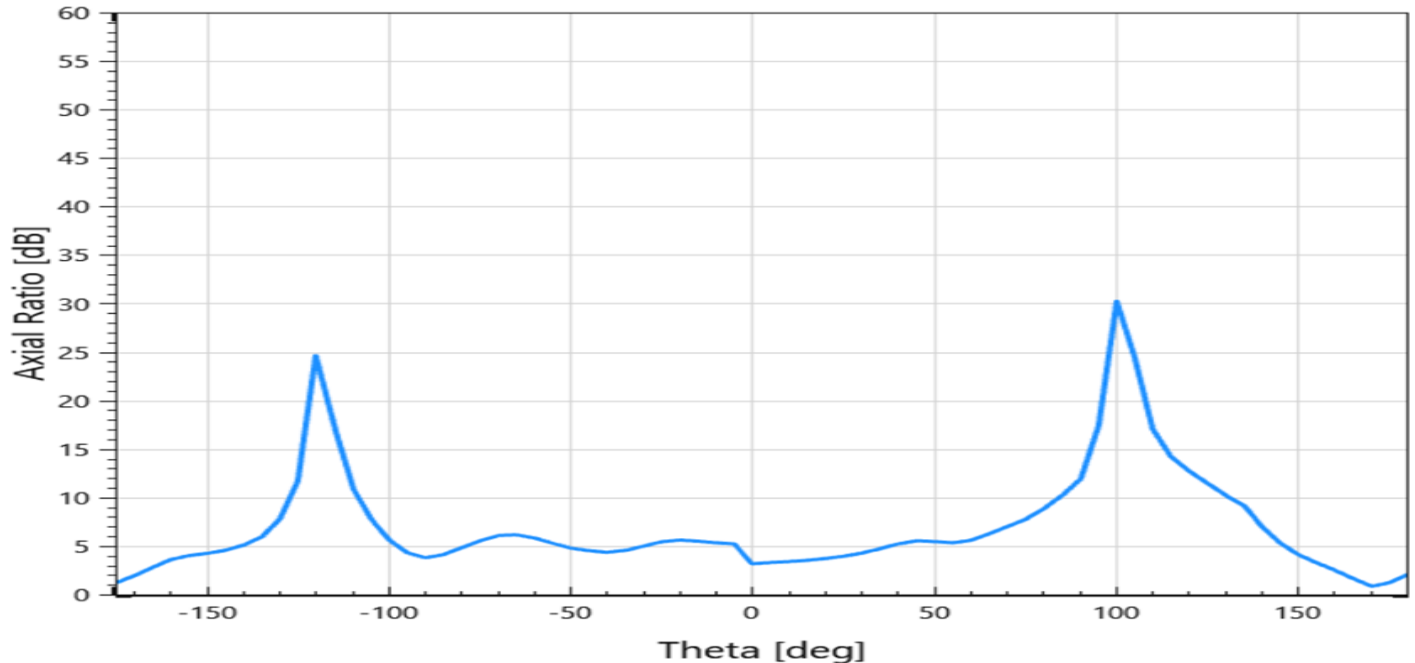
Axial Ratio Plots

Typical performances on 70 x 70 mm rectangle PCB

Axial Ratio Phi = 0°



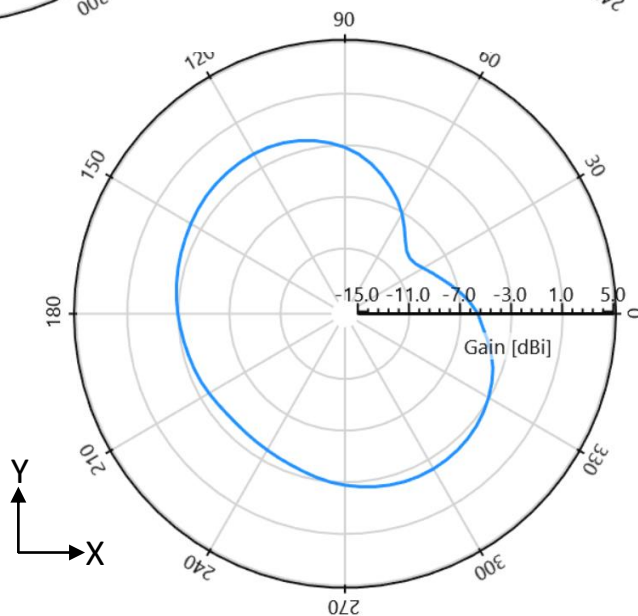
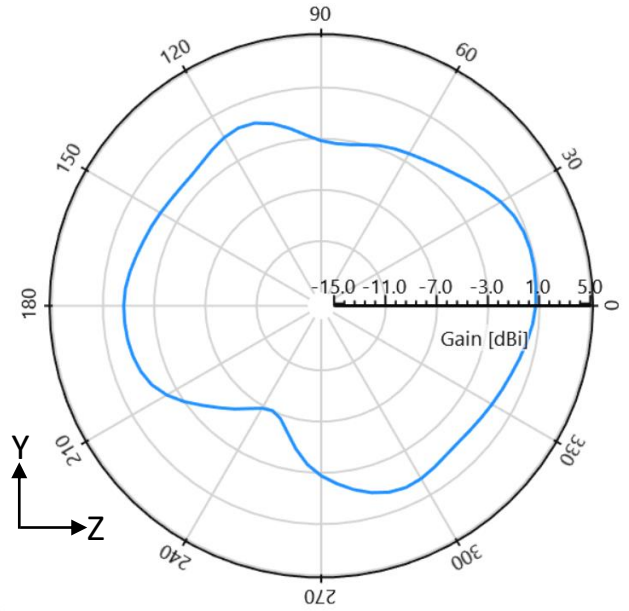
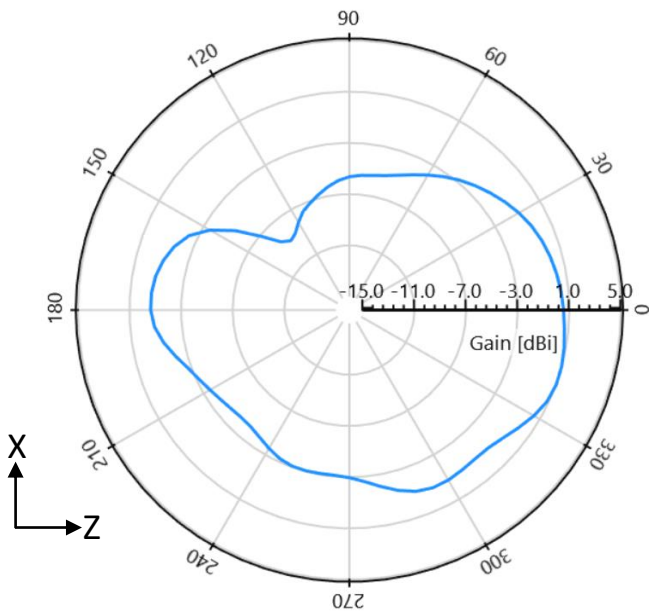
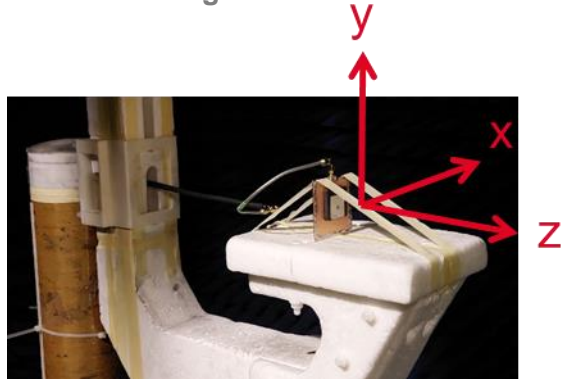
Axial Ratio Phi = 90°



ISM 915 MHz Ceramic Patch KYOCERA AVX Embedded Antenna Specifications
 KYOCERA AVX produces a wide variety of standard and custom antennas to meet user needs

Antenna Radiation Patterns

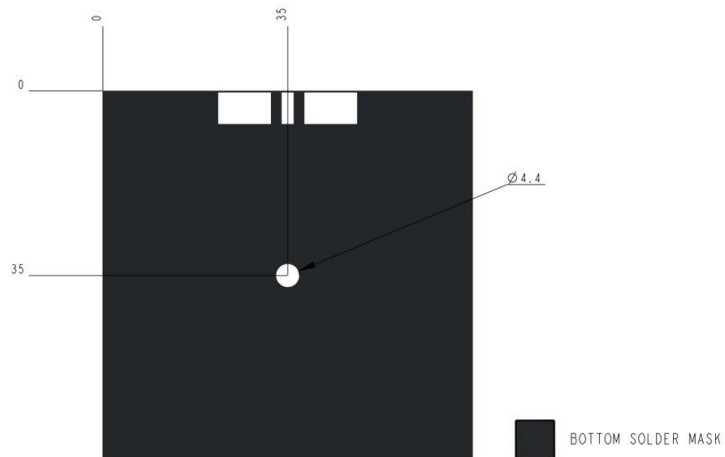
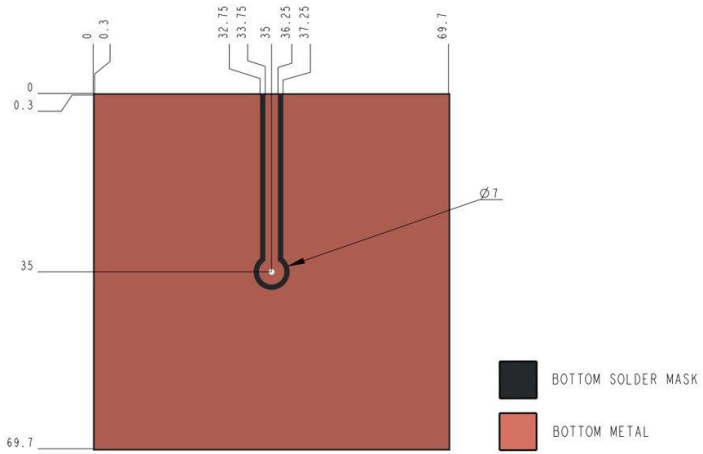
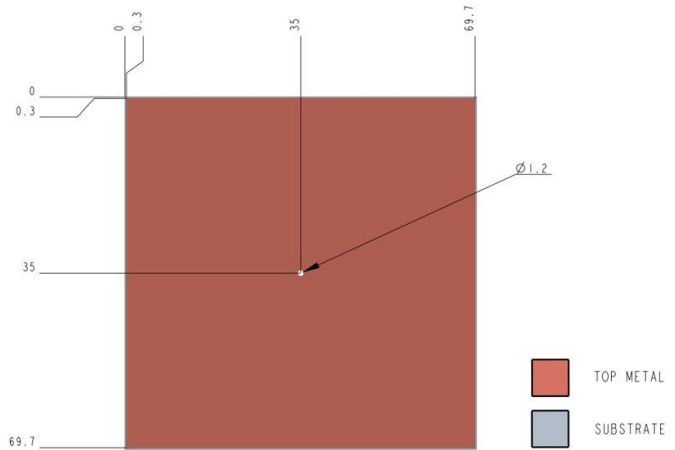
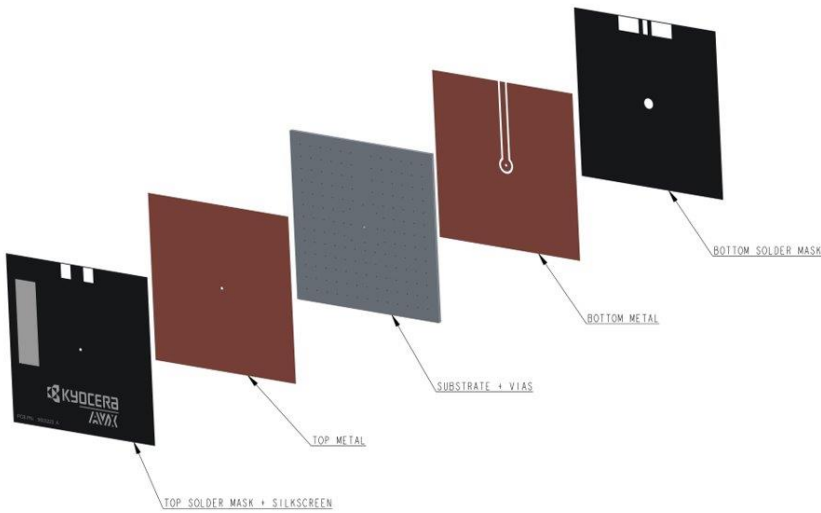
Typical performances on 70 x 70 mm rectangle PCB
 Measured @ 915 MHz



ISM 915 MHz Ceramic Patch KYOCERA AVX Embedded Antenna Specifications
 KYOCERA AVX produces a wide variety of standard and custom antennas to meet user needs

Antenna Layout

Typical Layout Dimensions (mm)

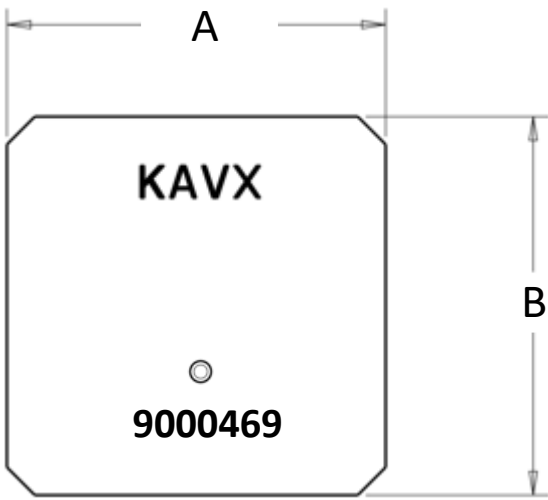


ISM 915 MHz Ceramic Patch KYOCERA AVX Embedded Antenna Specifications
 KYOCERA AVX produces a wide variety of standard and custom antennas to meet user needs

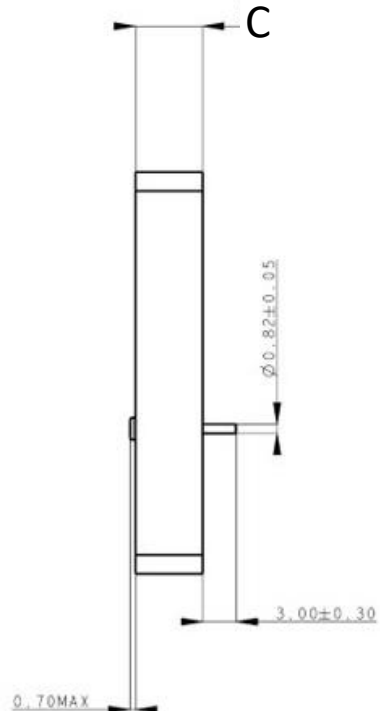
Mechanical Dimensions

Typical antenna dimensions (mm)

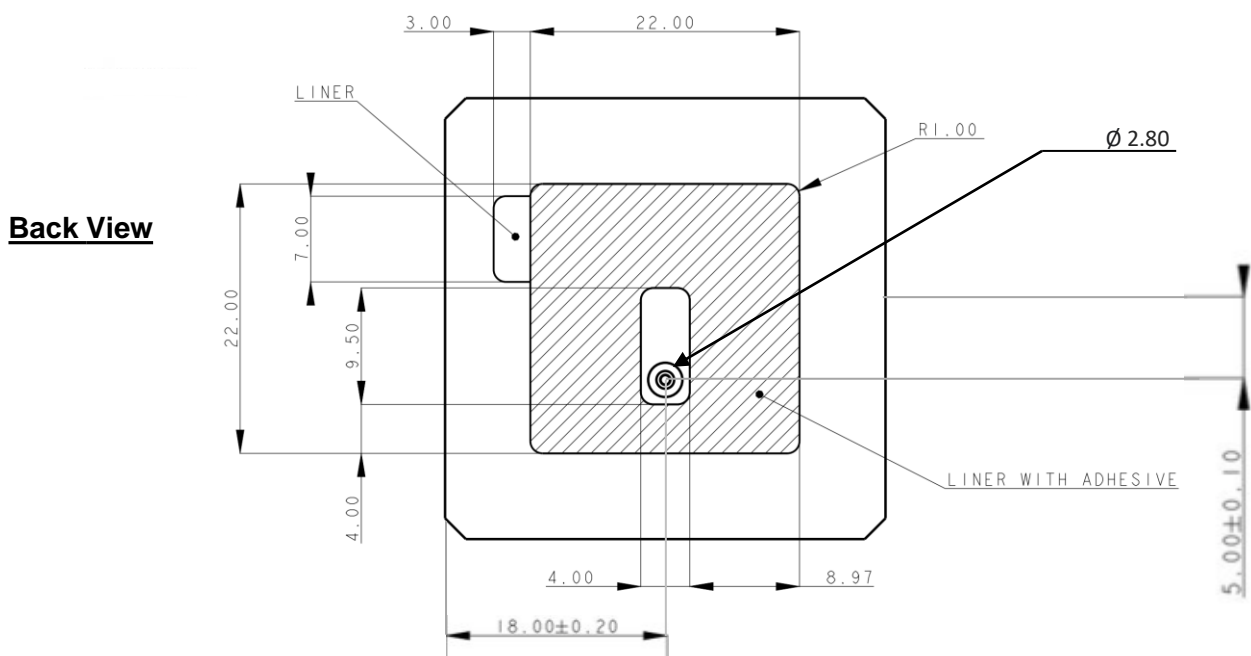
Part Number	A	B	C
9000469	36.0 ± 0.4	36.0 ± 0.4	6.0 ± 2



Top View



Side View



Back View