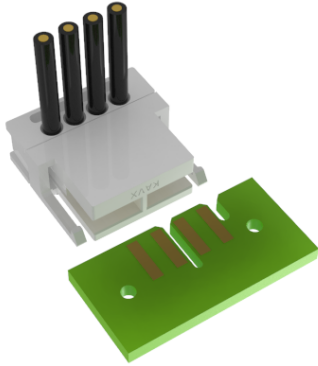


WIRE-TO-BOARD CARD EDGE CONNECTOR: 9169-000



General Information



KYOCERA AVX is expanding its card edge product offering with a new wire-to-board connector designed using two proven solder-less technologies. The newest addition to the broadening line of popular KYOCERA AVX card edge connectors is a wire-to-board solution featuring IDC contacts to terminate the wires to the connector and compression contacts, resulting in a very reliable connection to the mating board. Latches on both sides of the connector reinforce mechanical retention to the PCB. The connector is available from 2 to 10 positions for a wire range of 22-28AWG solid or stranded with a pitch of 2.5mm. There are eight housing color options and two plating options (tin or gold) on the contact area.

This connector is packed with several key features that provide significant functionality in a broad range of applications. The proven contact system has enhanced reliability, signal integrity, and full up to 3A/contact current rating. The connector is designed for mating PCB boards with 1.6mm thickness and gold-plated pads (tin plating option available). It is designed with a locating rib for polarization/coding. This product is UL approved.

APPLICATIONS

Provides a connector solution for mating PCB with wires in applications:

- Automotive & Transportation lighting
- Solid state lighting
- Industrial
- Consumer/White goods
- Product Specification: Refer to 201-01-232
- Application Notes: Refer to 201-01-233

FEATURES AND BENEFITS

- Unique WTB connection without soldering, using two proven technologies, Card Edge (compression contact) and IDC
- Excellent electrical and mechanical performance provide high integrity connections in harsh environments
- Reliable cold welded / gas tight IDC connection on wire side
- Easy installation and board locking feature

ELECTRICAL

- Current Rating : 3A for 2-6 Positions, and 2A for 7-10 Positions
- Voltage Rating : 100VAC(rms) or DC equivalent

ENVIRONMENTAL

- Operating Temperature: -40°C to +130°C
- Storage Temperature: -40°C to +60°C

MECHANICAL

- Sizes: 2 to 10 positions
- Wire range : 22-28AWG solid and stranded
- Insulator Material: PA66, UL94V-0
- Contact Material: Copper Alloy
- Plating: Gold or optional Tin
- Durability: 10 Cycles

HOW TO ORDER

00
Prefix
00 = Standard Products

9169
Series

0XX
Number of Ways
002 = 2
003 = 3
004 = 4
005 = 5
006 = 6
007 = 7
008 = 8
009 = 9
010 = 10

0XX
Wire Gauge Size
011 = 22 AWG
012 = 24 AWG
023 = 26 AWG
034 = 28 AWG

X
Housing color
9 = UL White
8 = UL Black
7 = UL Orange
6 = UL Green
5 = UL Red
4 = UL Yellow
3 = UL Blue
2 = UL Brown

0

X
Plating Options
1 = Contact area gold
6 = Pure tin all over



Safety Standards: UL/cUL 1977-File #E90723



The Important Information/Disclaimer is incorporated in the catalog where these specifications came from or available online at www.kyocera-avx.com/disclaimer/ by reference and should be reviewed in full before placing any order.

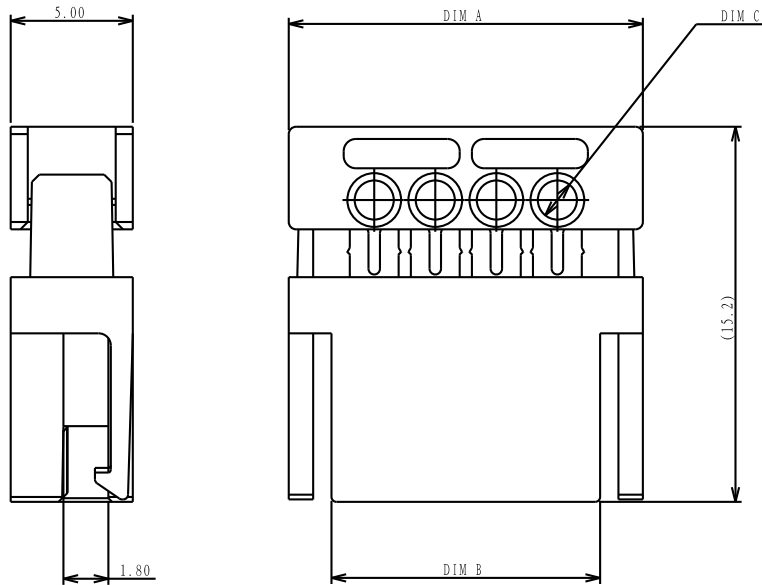
TDS-WTB-0032 | Rev 0

WIRE-TO-BOARD CARD EDGE CONNECTOR: 9169-000

Connector Assembly

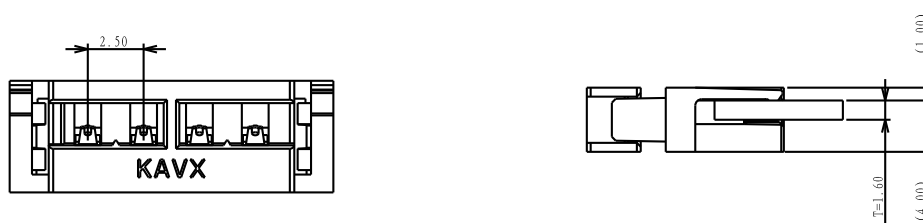


00-9169-0XX-0XX-X0X



POSITION	DIM. A	DIM. B
2	9.5	8.5
3	12.0	11.0
4	14.5	13.5
5	17.0	16.0
6	19.5	18.5
7	22.0	21.0
8	24.5	23.5
9	27.0	26.0
10	29.5	28.5

WIRE GAUGE SIZE		
CODE	WIRE GAUGE	DIM. C
11	22AWG Solid and Stranded	1.6
12	24AWG Solid and Stranded	
23	26AWG Solid and Stranded	1.3
34	28AWG Solid and Stranded	1.1



CONNECTOR ASSEMBLY WITH PCB

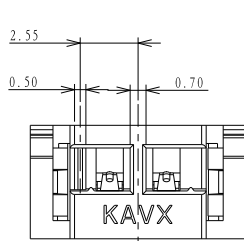
NOTES:

1. MATERIAL: COPPER ALLOY, TIN PLATING OVER NICKEL WITH OPTION OF GOLD OR TIN ON CONTACT NOSE
2. INSULATION MATERIAL: PA66, GLASS FILLED, UL94 V-0.
3. PRODUCT SPEC 201-01-232 AND APPLICATION NOTES 201-01-233.
4. PACKING METHOD IS PE BAG; PACKING QUANTITY 500 PCS. PER BAG.
5. UL APPROVED

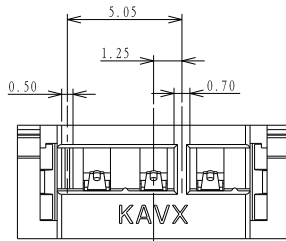
WIRE-TO-BOARD CARD EDGE CONNECTOR: 9169-000



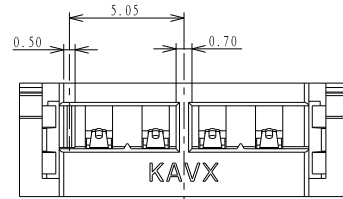
View Of Barrier Distribution (Keying)



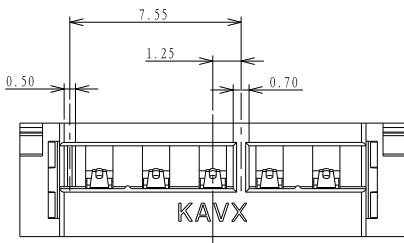
2 POS.
00-9169-002-OXX-X0X



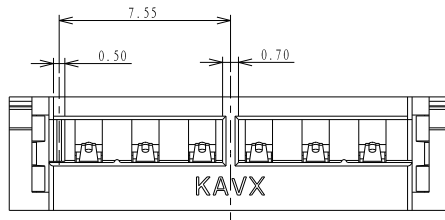
3 POS.
00-9169-003-OXX-X0X



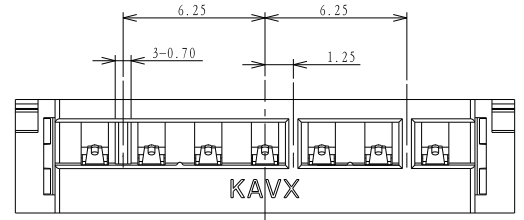
4 POS.
00-9169-004-OXX-X0X



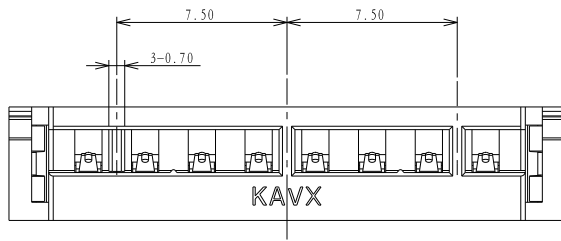
5 POS.
00-9169-005-OXX-X0X



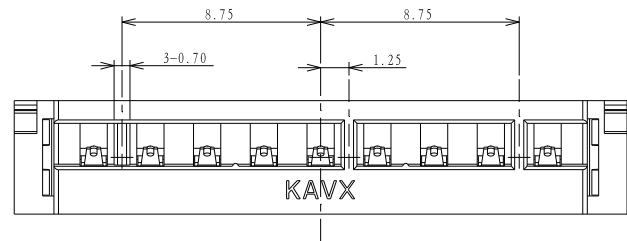
6 POS.
00-9169-006-OXX-X0X



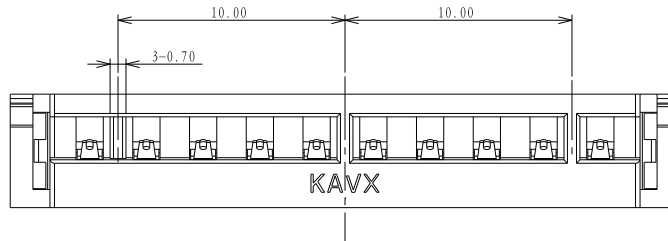
7 POS.
00-9169-007-OXX-X0X



8 POS.
00-9169-008-OXX-X0X



9 POS.
00-9169-009-OXX-X0X

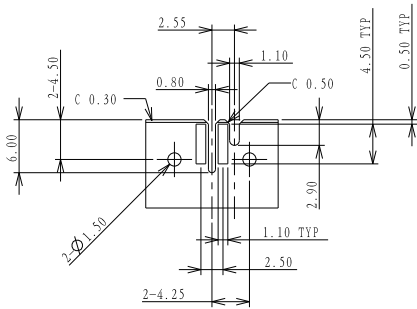


10 POS.
00-9169-010-OXX-X0X

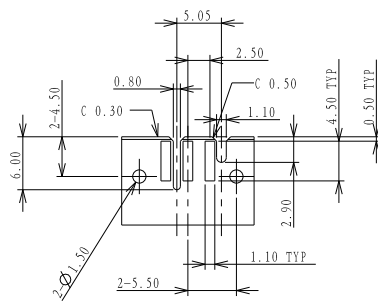
WIRE-TO-BOARD CARD EDGE CONNECTOR: 9169-000



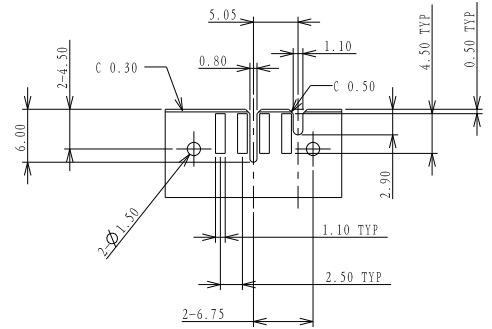
Recommended PCB Layout



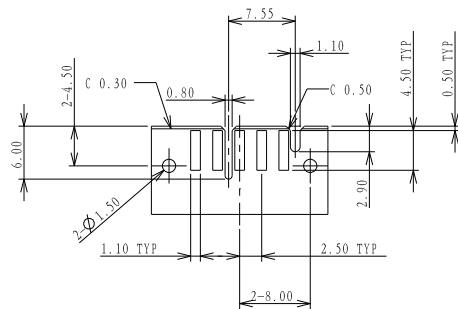
2 POS.
00-9169-002-OXX-X0X



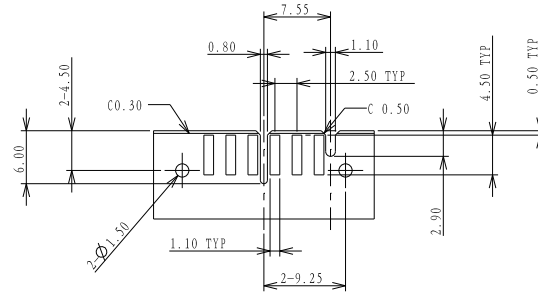
3 POS.
00-9169-003-OXX-X0X



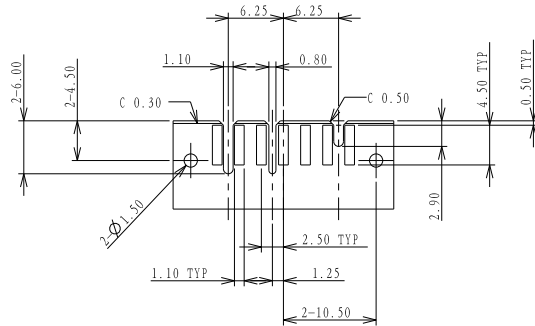
4 POS.
00-9169-004-OXX-X0X



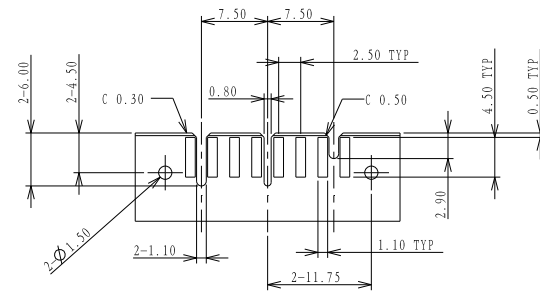
5 POS.
00-9169-005-OXX-X0X



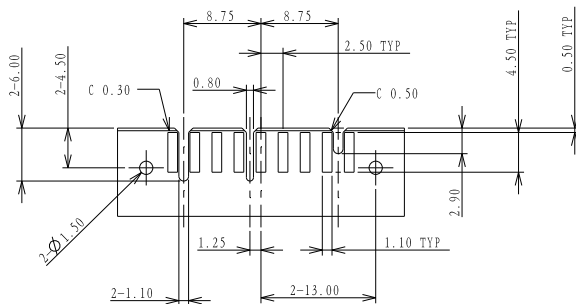
6 POS.
00-9169-006-OXX-X0X



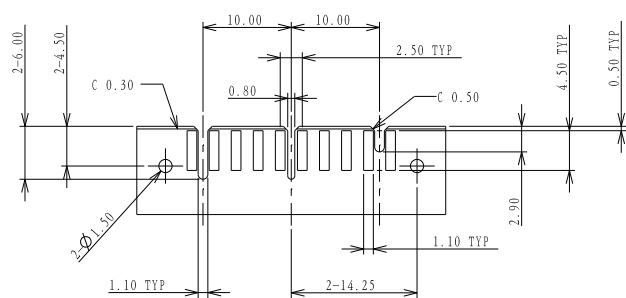
7 POS.
00-9169-007-OXX-X0X



8 POS.
00-9169-008-OXX-X0X



9 POS.
00-9169-009-OXX-X0X



10 POS.
00-9169-010-OXX-X0X