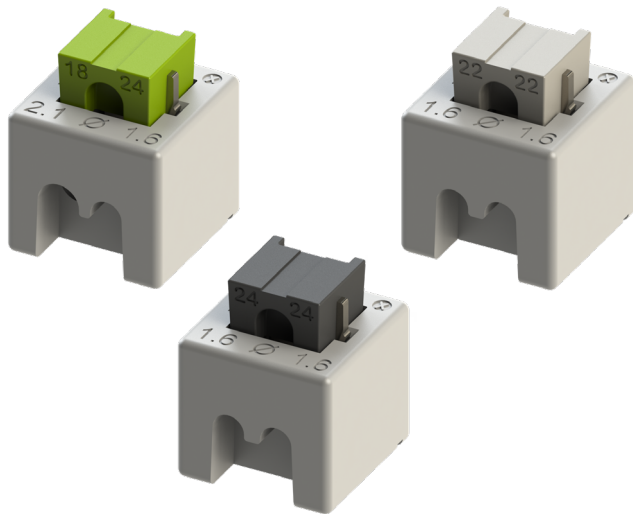


9179-000 Series IDC Splice Connector

General Information



GENERAL DESCRIPTION

KYOCERA AVX continues to develop unique connectors to fill gaps in current market offerings. Our newest addition that broadens our line of Wire-To-Wire solutions is the 9179 Splice Connector. The 9179 Splice Connector utilizes IDC or Insulation Displacement technology to terminate (splice) two wires together.

The Wire-To-Wire 9179 Splice IDC Connector is packed with key features that provide significant functionality in a broad range of applications. Suitable with solid or stranded wires, this connector supports a mixed combination of wire gauges ranging from 18 to 24 AWG. The 9179 Splice IDC Connector's design requires no special tooling for easy wire termination in the field and allows for wire insertion from one side or both sides. Rated to UL94V-0 at up to 10A per contact, the small form factor of the 9179 series' housing is made of glass-filled thermoplastic and is also compatible with potting.

APPLICATIONS

- Industrial
- Lighting
- Consumer & Automotive Wire-To-Wire terminations
- Replacement of traditional splicing solutions
- Oil & Gas Down Hole Drilling
- Product Specification: Refer to
- Application Notes: Refer to

FEATURES AND BENEFITS

- IDC contact provides a gas-tight connection for long term reliability
- Tested to levels of shock, vibration, and temperature cycling for enhanced reliability
- Supports a combination of wire gauges ranging from 18 to 24 AWG including color coding
- No special tooling required for easy installation in the field
- Compatible with potting
- Allows for wire insertion from one side or both sides

ELECTRICAL

- Current Rating: Up to 10A
- Voltage Rating: 300VAC (RMS) or DC Equivalent

ENVIRONMENTAL

- Operating Temperature: -40°C to +125°C
- Storage Temperature: -40°C to +60°C

MECHANICAL

- Insulator Material: Glass filled thermoplastic UL94-V0
- Contact Material: Phosphor Bronze
- Plating: Tin over Nickel

HOW TO ORDER

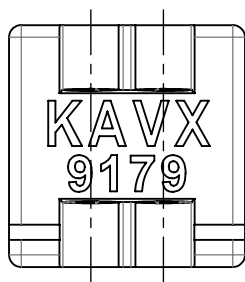
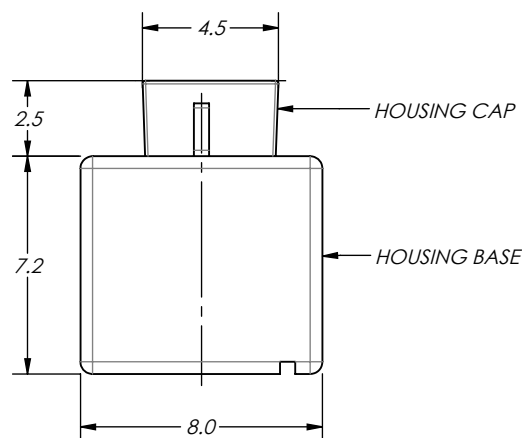
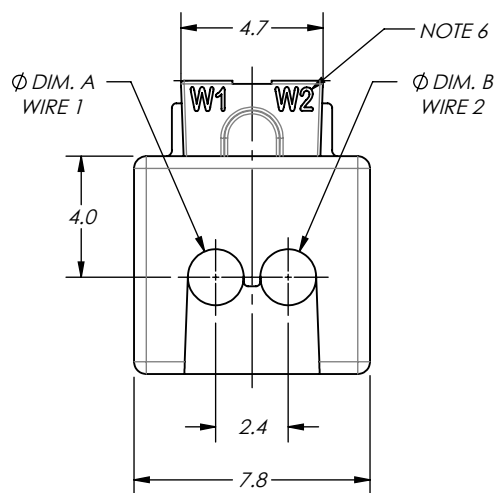
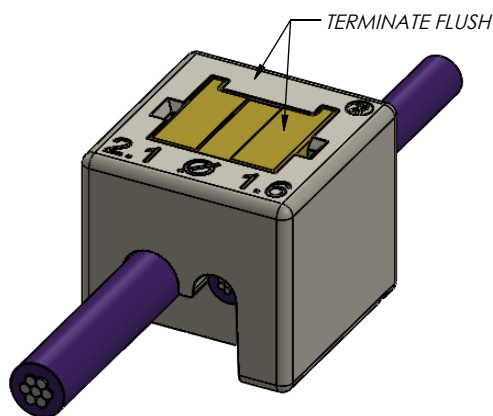
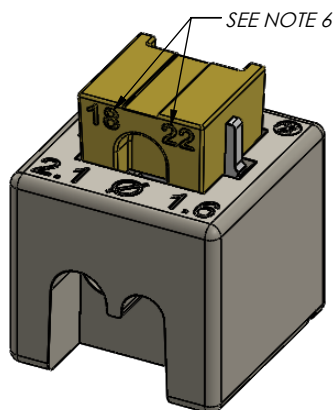
00	9179	002	OXX	9	06
Prefix	Series	Number of Ways	Wire Size*	Housing Color	Plating Option
00 = Standard Products		001 = 1	OXX =	Standard 9 = UL White/ Natural Special	06 = Tin over Nickel

*Solid or Standed wire accepted:
more than 19 strands per wire not recommended

Certification: UL File #E90723

00-9179-002-0XX-906

PART NUMBER	WIRE 1	WIRE 2	DIM. A	DIM. B	CAP COLOR
00-9179-002-011-906	18 AWG	18 AWG	2.10	2.10	RED
00-9179-002-012-906	18 AWG	20 AWG	2.10	2.10	ORANGE
00-9179-002-013-906	18 AWG	22 AWG	2.10	1.60	YELLOW
00-9179-002-014-906	18 AWG	24 AWG	2.10	1.60	GREEN
00-9179-002-022-906	20 AWG	20 AWG	2.10	2.10	BLUE
00-9179-002-023-906	20 AWG	22 AWG	2.10	1.60	VIOLET
00-9179-002-024-906	20 AWG	24 AWG	2.10	1.60	BROWN
00-9179-002-033-906	22 AWG	22 AWG	1.60	1.60	WHITE
00-9179-002-034-906	22 AWG	24 AWG	1.60	1.60	GRAY
00-9179-002-044-906	24 AWG	24 AWG	1.60	1.60	BLACK



NOTES:

1. HOUSING MATERIAL: GLASS-FILLED THERMOPLASTIC; FLAME RETARDANT PER UL94V-0; BASE COLOR: NATURAL; CAP COLOR PER PART NUMBER TABLE.
2. CONTACT MATERIAL: HIGH STRENGTH COPPER ALLOY.
3. CONTACT PLATING: LEAD-FREE TIN OVER NICKEL.
4. PART TO CONNECT WIRE COMBINATIONS AS NOTED IN THE TABLE ABOVE. THE LARGER WIRE IS ALWAYS WIRE 1.
5. PART ACCOMMODATES 18-20 AWG WIRES WITH INSULATION UP TO 2.10 INSULATION, AND 22-24 AWG WIRES WITH INSULATION UP TO 1.60 INSULATION.
6. NUMBERS ON CAP INDICATE WIRE GAUGE.
7. WIRES MAY BE INSERTED FROM FRONT SIDE, BACK SIDE, OR BOTH SIDES. BOTH WIRES SHOULD BE VISIBLE WHEN VIEWED FROM BOTTOM OF CONNECTOR.
8. PARTS TO BE PACKAGED IN BULK; 500 PARTS PER BAG.