

Part No. X9003063-LPDNMW

External LoRa Fiberglass Antenna

868, 915 MHz
Supports: LoRa, ISM



External LoRa Fiberglass Antenna

868, 915 MHz

KEY BENEFITS

Quicker Time-to-Market

Standard part means fewer design changes with, simple implementation

Easy Assembly using using N-type (Male) connector

Best in Class Performance

External antennas are designed to maintain high efficiency in a variety of device configurations

Great Flexibility

Standard connector to makes easy set-up

Environmental Compliance

Products are the latest RoHS version compliant.

APPLICATIONS

- Cellular
- Telematics
- Healthcare
- M2M, Industrial devices
- Smart Grid
- IoT
- Metering
- Smart cities

KYOCERA AVX series of External Fiberglass Antennas deliver on the key needs of device designers for higher functionality and performance in outdoor environments.

This LoRa External Fiberglass antenna covers the ISM and LoRa frequency bands 868MHz and 915MHz with an IP67 waterproof rate. Designed for outdoor use, its robust IP rating and omnidirectional features make it ideal for thriving in any outdoor environment.

Electrical Specifications

Typical Characteristics antenna measured in Free Space

Frequency (MHz)	Free Space	
	868	915
VSWR	1.6:1	1.5:1
Average Efficiency	36%	35%
Peak Gain	-1.2 dBi	-0.3 dBi
Gain @ Zenith	-14.3 dBi	-12.2 dBi
Polarization	Linear	
Radiation Pattern	Omni-directional	
Power Handling	2 W	
Feed Point Impedance	50 ohm	

Mechanical Specifications & Ordering Part Number

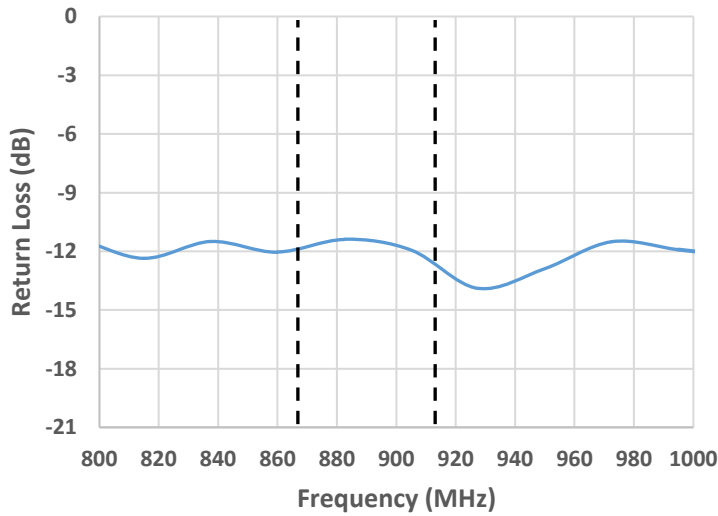
Ordering Part Number	X9003063-LPDNMW
Dimensions (mm)	225 (height) x 16.3 Ø
Mounting Type(s)	Connector Thread
Connector Type	N-type (Male)
Weight (grams)	84.8
Operating Temperature	-40°C to 80°C
Storage Temperature/ Humidity	-40°C to 80°C
IP Rating	IP67
Color	White
Housing Material	Fiber Glass
Packaging	PE Bag + Carton Box

External LoRa Fiberglass KYOCERA AVX Antenna Specifications.
 KYOCERA AVX produces a wide variety of standard and custom antennas to meet user needs.

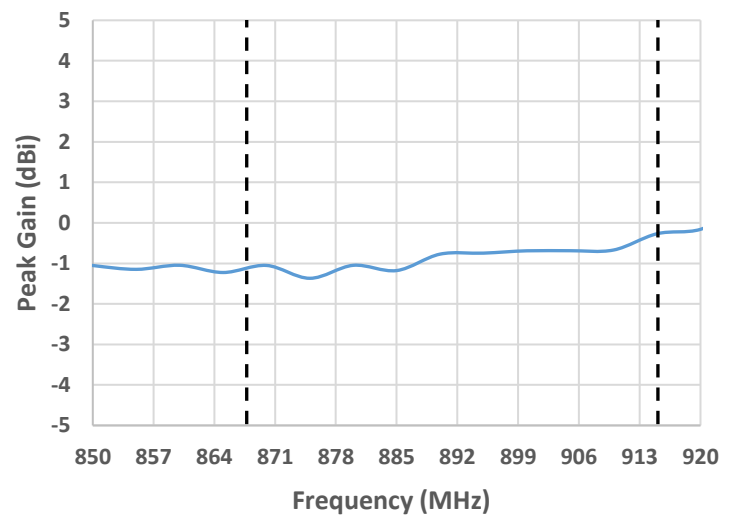
VSWR, Peak Gain, Efficiency and Gain zenith

Typical performance measured in Free Space

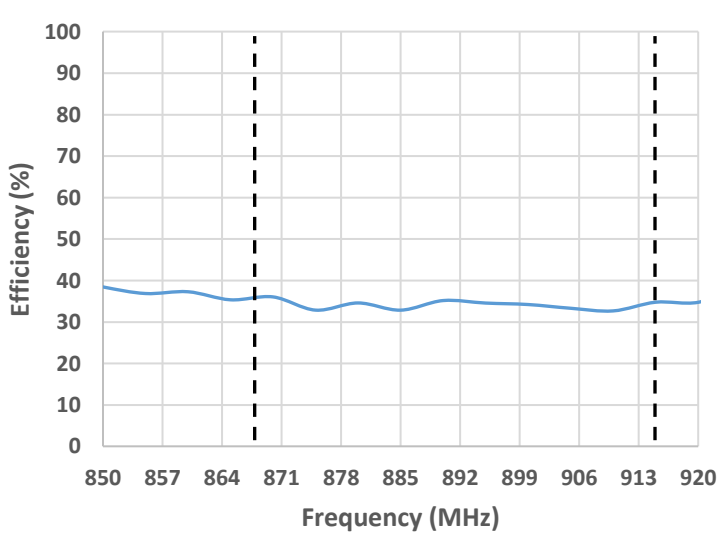
Return loss (868-915 MHz)



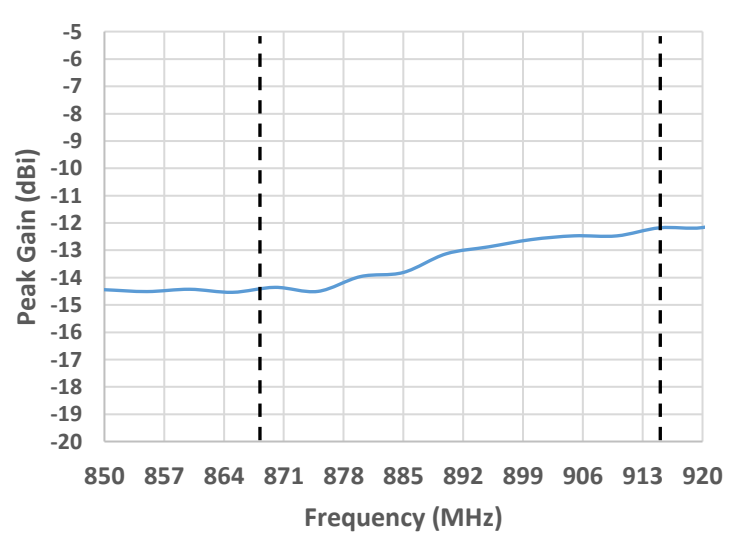
Peak gain (868-915 MHz)



Efficiency (868-915 MHz)



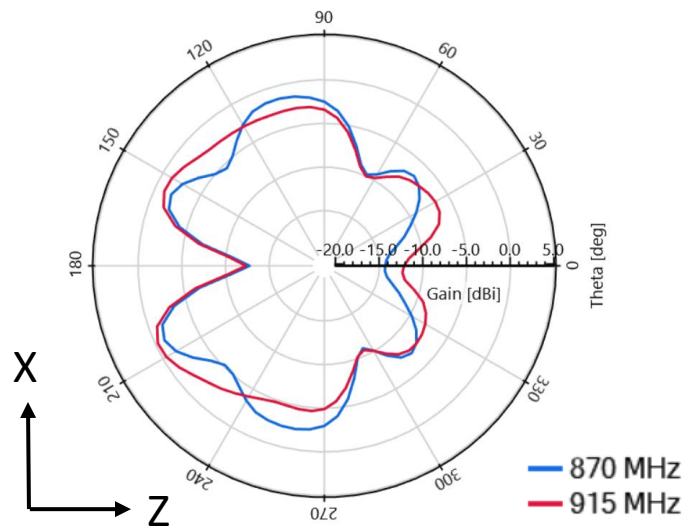
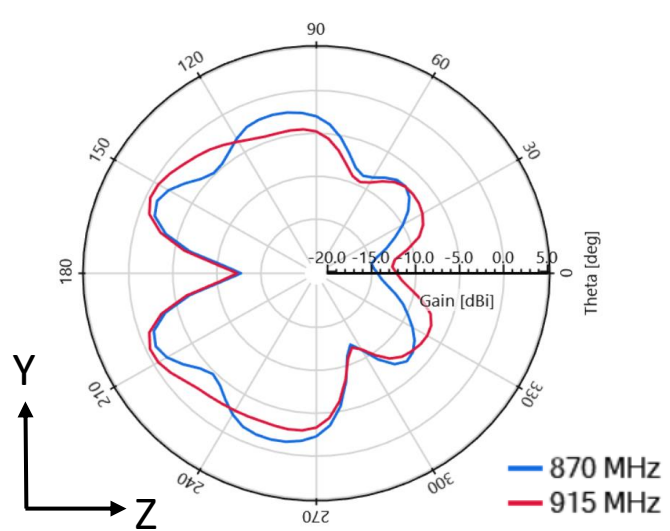
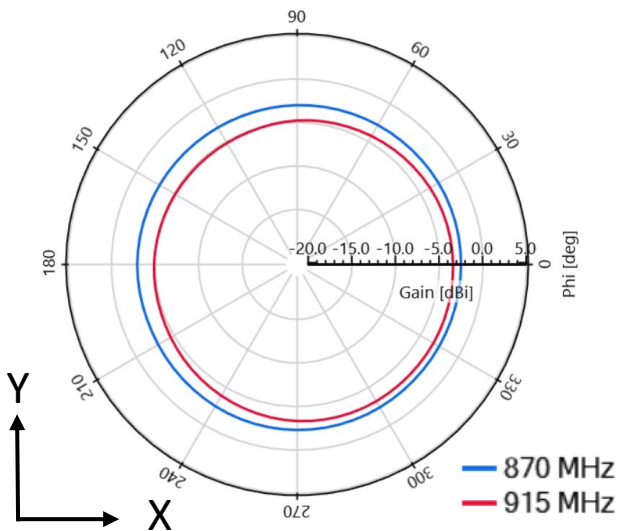
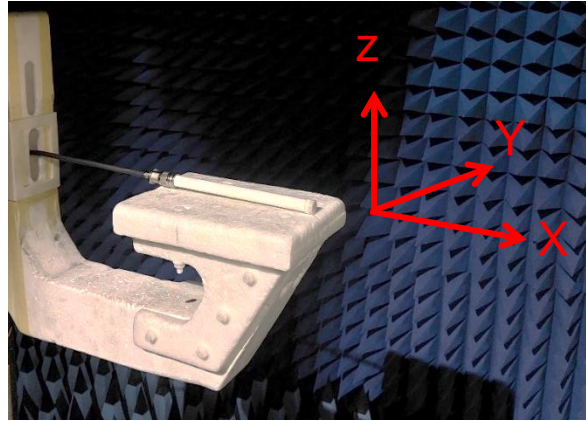
Gain zenith (868-915 MHz)



External LoRa Fiberglass KYOCERA AVX Antenna Specifications.
 KYOCERA AVX produces a wide variety of standard and custom antennas to meet user needs.

Antenna Radiation Patterns

Typical performance X9003063-LPDNMW performance in Free Space (868 and 915 MHz).

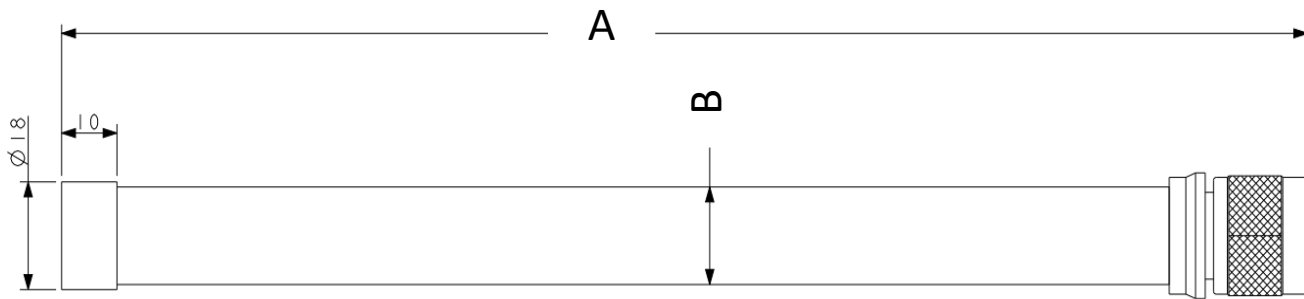


External LoRa Fiberglass KYOCERA AVX Antenna Specifications.
KYOCERA AVX produces a wide variety of standard and custom antennas to meet user needs.

Mechanical Specifications

Typical antenna dimensions in mm

Part Number	A	B (Ø)	Connector
X9003063-LPDNMW	225 ± 2.0	16.3	N-type (Male)



Items	Description
1	N-type (Male) connector
2	Fiber Glass Tube
3	Cover

